

DECIDUOUS AND PERMANENT TEETH



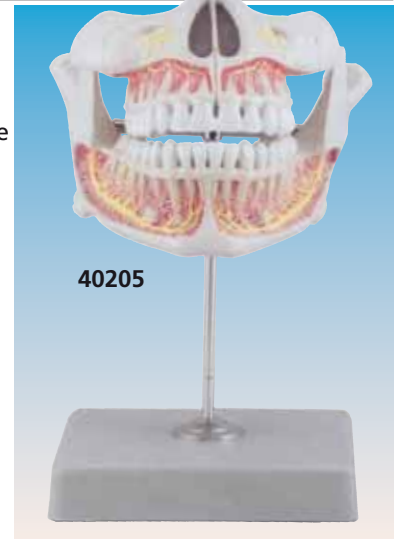
40206

• **40206 DECIDUOUS TEETH**

Size: 9x9x10 cm - weight: 85 g
Mounted on base with stand.
This life size model shows the upper and lower jaw of a 5 years old child. The lower jaw is movable to reproduce the natural chew. The model exposes the arrangement of the young teeth.

• **40205 PERMANENT TEETH**

Size: 11x11x12 cm - weight: 170 g
Mounted on base with stand.
This life size model shows the upper and lower jaw of an adult. The lower jaw is movable to reproduce the natural chew. The model exposes the complete set of permanent teeth with roots and nerves fibres.



40205

LOWER JAW



• **40210 LOWER JAW**

Size: 35x18x31 cm - weight: 1130 g
Mounted on base with stand.
This 3X life size model is divisible into 6 parts to show all the characteristics of an adult half mandible. A portion of the jaw can be removed to show the roots of the teeth and the internal structure of the bone. Canine and molar teeth can be removed and dissected longitudinally to observe the tooth roots, pulp and nerves.

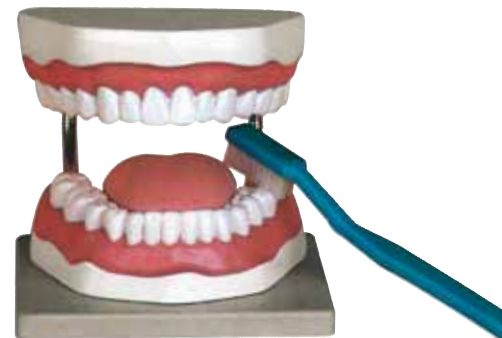
DENTAL PATHOLOGY



• **40212 DENTAL PATHOLOGY MODEL**

Size: 6x4.5x11 cm - weight: approx. 100 g
This 4X life size model shows the process of dental caries in its progressive stages. The tissues forming the tooth (enamel, dentine and pulp) are shown, along with the way in which they are affected by the caries process.

ORAL HYGIENE



• **40200 ORAL HYGIENE**

Size: 12x16x22 cm - weight: 1 kg
Mounted on base.
A 3X life size model that is useful for teaching the correct way to brush teeth. A giant toothbrush is included.

INCISOR, CANINE, MOLAR



• **40213 SET 3 TEETH: INCISOR, CANINE, MOLAR**

Size: 33x33x11 cm - weight: 700 g
5-part model includes representations (10X life size) of human incisor, canine and molar teeth. The canine and molar can be divided into 2 parts each, showing internal features (dentine, enamel, cement and pulp).

LOWER MOLAR WITH CARIES



• **40214 LOWER MOLAR WITH CARIES**

Size: 11x11x19.5 cm - weight: approx. 250 g
Mounted on base with stand.
This 1-piece model is approximately 10X life size; it shows the most important dental pathologies, including dental caries, pulpitis, gingivitis and periapical periodontitis.

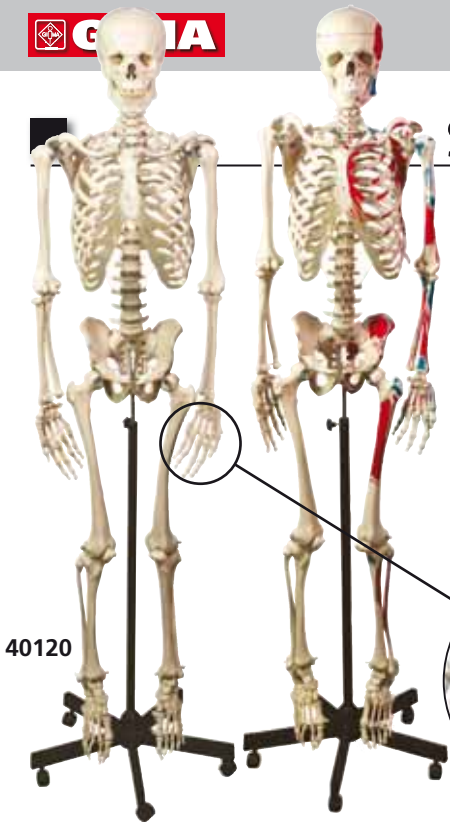
DENTAL CARIES



• **40211 DENTAL CARIES**

Size: 12x6x6 cm - weight: approx. 300 g
This model, composed of 7 parts, is 4X life size. It consists of 3 teeth, seated in their sockets, showing the progressive deterioration of tooth structure by dental caries. The first tooth shows the caries in the enamel. In the second tooth, the caries invades the dentine. In the third tooth, the pathology affects the pulp, jeopardizing the vitality of the tooth.

SKELETONS AND SKULLS



40125

40115



• 40115 MINI SKELETON
Height: 80 cm Weight: 1.5 kg. This 1/2 life size model shows the anatomy of the human skeleton in high detail. The skull can be disassembled into 3 parts: skullcap, base of skull and mandible. All the main joints are articulated. Arm and legs can be removed easily. Mounted on a stand for hanging.

• 40120 HUMAN SKELETON
Height: 170 cm Weight: approx 10 kg. This model is a replica of a life size human skeleton and shows all the skeleton part in high details. It's hand-assembled to provide intricate details and long-lasting durability. The main joints are articulated; the upper and lower limbs can be removed easily. The following parts are detachable: Calvarium, Skull, Jaw, Arms, Legs. Supplied with 5-caster roller stan.

• 40125 MUSCULAR HUMAN SKELETON
Same as code 40120 but with the left side of the skeleton that shows the point of origin (red) and the point of insertion (blue) of the muscles.

• 40160 HUMAN SKULL

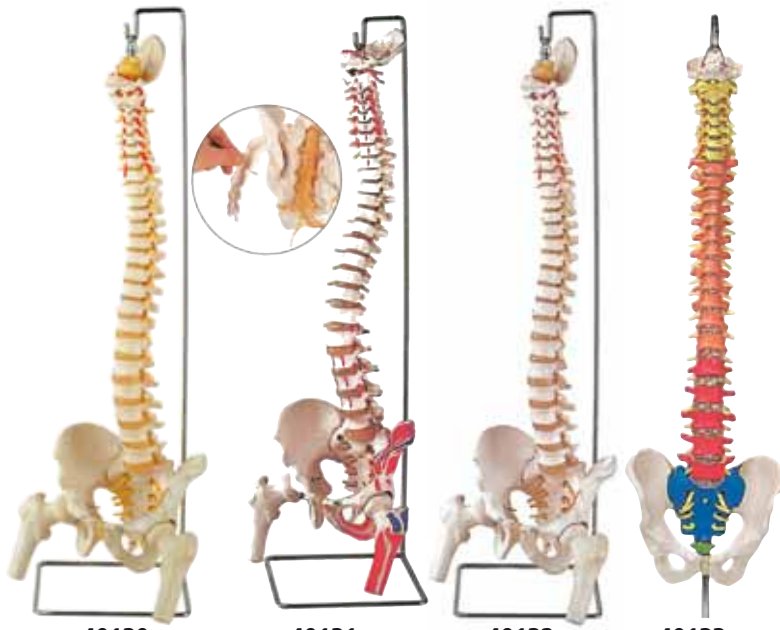
• 40161 HUMAN SKULL - numerated

Size: 22x14x16 cm - weight: 950 g - 3 parts. A detailed reproduction of a life size human skull with all structural details. The skullcap is removable to show internal details. The mandible is articulated and removable. All of the joints, sutures, fissure, foramina and processes are portrayed with utmost accuracy. Significant structures are numerated (only for 40161).



40120

VERTEBRAL COLUMNS



40130

40131

40132

40133

FLEXIBLE VERTEBRAL COLUMNS

Fully flexible life size vertebral columns consisting of the occipital plate, cervical, thoracic and lumbar vertebrae, sacrum, coccyx, complete pelvis with symphysis, removable femur heads (only 40130,31,32).

All models also features representation of the vertebral arteries, spinal nerve branches, and a prolapsed L3-L4 intervertebral disc.

On 40131 the left side of the skeleton shows the points of origin (red) and the point of insertion (blue) of the muscles. On 40131 and 40132 the sacral crest and coccyx are removable to show the sacral section of the spinal card and associated nerve branches. On 40133 the various regions of the spinal column are colour coded for easy identification.

GIMA code	FLEXIBLE VERTEBRAL COLUMNS	Size cm	Weight	Magnif.
40130	VERTEBRAL COLUMN with femur heads	95x20x20	3 kg	1X
40131	VERTEBRAL COL with femur + muscle	95x20x20	3 kg	1X
40132	VERTEBRAL COL with femur + open sacrum	95x20x20	3 kg	1X
40133	SPINAL COL with colour coded regions	98x23x23	970 g	1X

SKELETAL SYSTEM

40136



Cervical spinal column consists of 7 cervical vertebrae with intervertebral discs, occipital plate, cervical nerves, vertebral arteries, spinal cord and brain stem.

40137



Thoracic spinal column consists of 12 thoracic vertebrae with intervertebral discs, thoracic nerves and spinal cord.

40138



Lumbar spinal column with sacral and coccyx bones. It consist of 5 lumbar vertebrae with intervertebral discs, lumbar nerves and spinal cord. The sacral crest and coccyx are removable

40180



3 lumbar vertebral with hernia and prolapsed intervertebral disc. Shows 3 lumbar vertebrae with spinal nerves, dura mater and 2 intervertebral discs affected by lateral and media hernia.

40185

GIMA code	SKELETAL SYSTEM	Size cm	Weight	Magnif.
40136	CERVICAL SPINAL COLUMN	12x12x22	350 g	1X
40137	THORACIC SPINAL COLUMN	12x12x40	600 g	1X
40138	LUMBAR SPINAL COLUMN	12x12x36	800 g	1X
40180	HERNIA PATHOLOGY	16.5x12x26	300 g	1X
40185	ADVANCED OSTEOPOROSIS	12x12x15	200 g	1X

KNEE AND SHOULDER

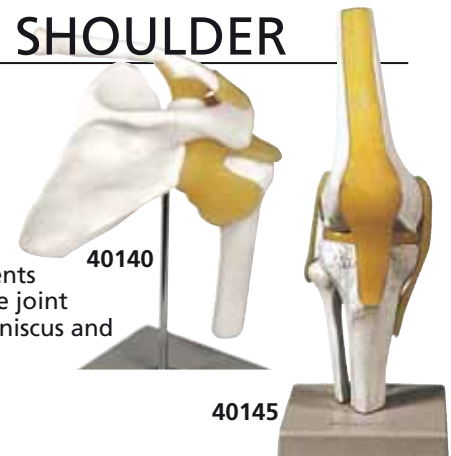
• 40140 SHOULDER JOINT

Size: 29x12x12cm - 560g - 1 part - 1X
Mounted on stand.

• 40145 KNEE JOINT

Size: 12x12x31cm - 440g - 1 part - 1X

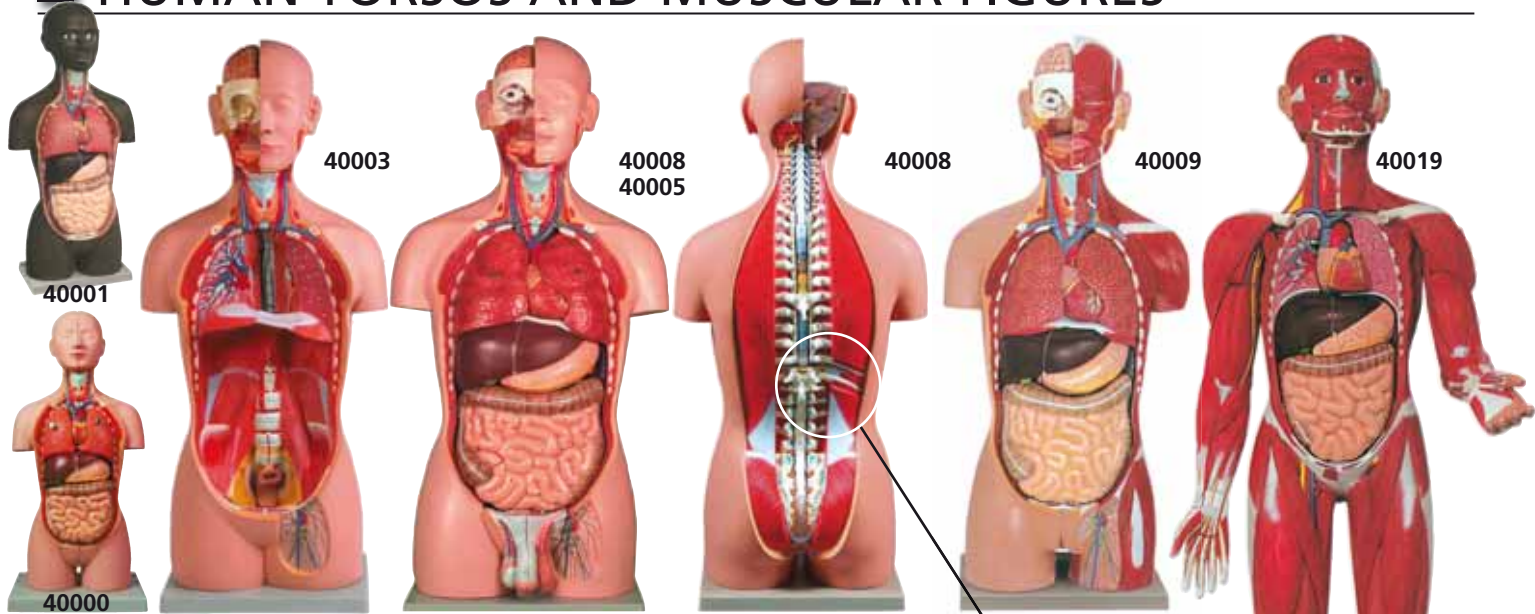
The life size model represents a functional model of knee joint with lateral ligaments, meniscus and patellar ligament.



40140

40145

HUMAN TORSOS AND MUSCULAR FIGURES



GIMA code	HUMAN TORSOS *SUPPLIED WITH CD ROM GUIDE	Size	Weight	Parts
40000	MINI TORSO	20x15xh45 cm	2.1 kg	16
40001	MINI TORSO - african	20x15xh45 cm	2.1 kg	16
40003	TORSO UNI SEX *	23x33xh90 cm	9 kg	16
40005	TORSO DUAL SEX*	23x33xh90 cm	9.3 kg	25
40008	TORSO DUAL SEX OPENBACK*	23x33xh90 cm	9.3 kg	27
40009	MUSCULAR TORSO DUAL SEX OPENBACK*	23x33xh90 cm	10 kg	28
40019	MUSCULAR FIGURE	30x33xh87 cm	5.3 kg	30

Some of the detachable parts of human torsos:

Removable structures, of codes 40005-8-9, include the following:
 - eye with optic nerve and extraocular muscles
 - half of the brain - trachea
 - descending thoracic aorta and esophagus - right and left lungs (two parts each)- liver with gallbladder - half of one kidney - two part heart - stomach dissected in two parts (not for 40005) - pancreas, duodenum and spleen - small and large intestines - male and female urogenital systems (4 parts each), (on 40009 femal system is provided of fetus detachable in 3 parts) - thoracic vertebra (T12) with spinal cord (code 40008 and 40009 only).

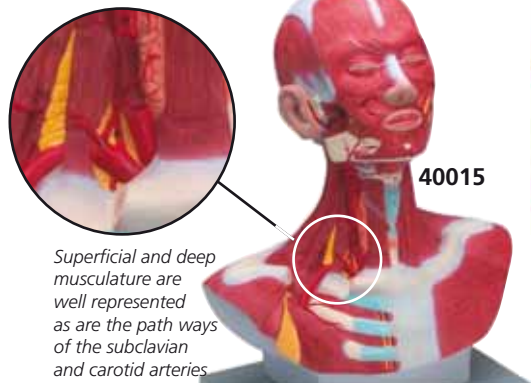


Detachable parts of human muscular figure 40019:



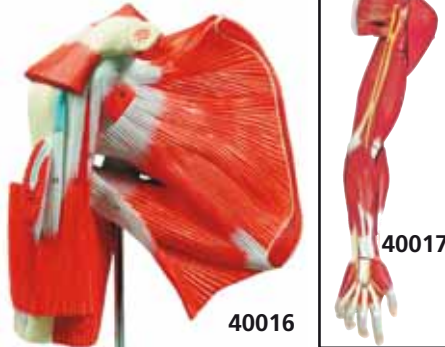
HEAD MUSCULATURE

- 40015 HEAD/NECK MUSCULATURE
 Size: 37x23x46 cm
 - 3.1 kg - 1 part - life size



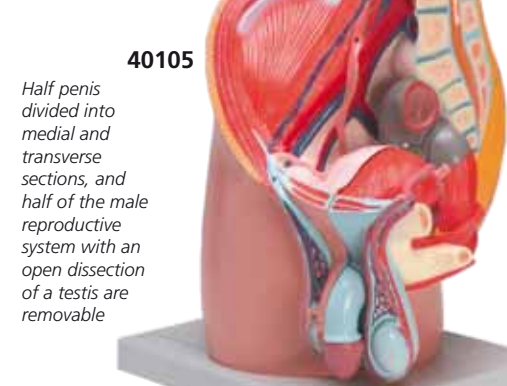
Superficial and deep musculature are well represented as are the path ways of the subclavian and carotid arteries

MUSCLES



- 40016 SHOULDER MUSCLE
 Size: 23x19x11 cm - 435 g - 1 part - 1X
- 40017 ARM MUSCLE
 Size: 74x20x12 cm - 1.9 kg - 7 parts
- 40018 LEG MUSCLE
 Size: 110x19x14.5 cm - 5.1 kg - 13 parts
 Mounted on base with stand

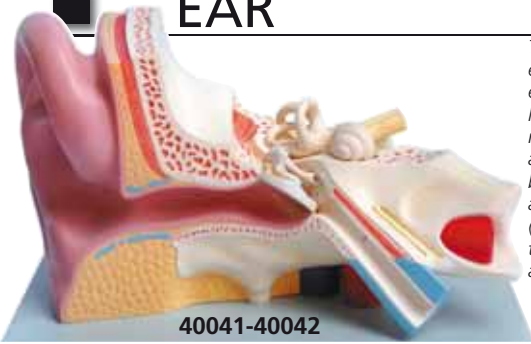
PELVIS



- 40105
 Half penis divided into medial and transverse sections, and half of the male reproductive system with an open dissection of a testis are removable

GIMA code	PELVIS size	Sex	Kg	Parts	Mag
40100	25x16x27	fem	1.3	3	1X
40105	25x18x27	male	1.5	4	1X

EAR



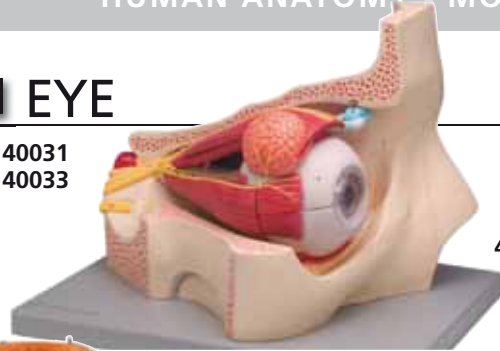
These models show the external, middle and inner ear. The eardrum with malleus, incus and stapes are removable. Also cochlea and labyrinth with vestibular and cochlear nerves and 2 bones sections (40042 only) that define the middle and inner ear are removable.

40041-40042

GIMA code	EAR SIZES	Kg	Parts	Mag
40041	33x23x21 cm	1	3	3X
40042	33x23x21 cm	2	5	3X

EYE

40031
40033



40030



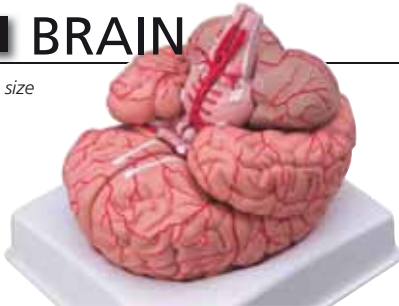
Models show the eye ball with optic nerves and muscles in its natural position in the bony orbit



GIMA code	EYE WITH ORBIT SIZES	Kg	Parts	Mag
40030	16x17x26 cm	1.1	6	6X
40031	42x30x31 cm	3.2	4	5X
40033	42x30x31 cm	3.4	11	5X

BRAIN

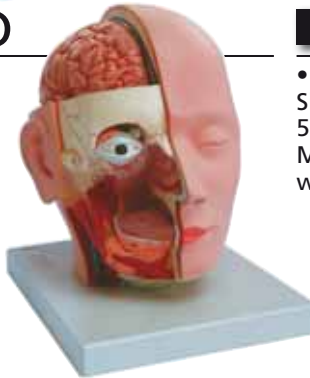
Life size



Can be divided into 9 parts showing the temporal and occipital lobes, the frontal and parietal lobes, the cerebellum, the brain stem and basiliary artery

• 40020 BRAIN WITH ARTERIES
Size: 16x18x16 cm - 1 kg - 9 parts - 1X

HEAD



• 40010 HEAD DISSECTION - life size
Size: 18x25x23 cm - 140 g - 4 parts - 1x

LARYNX

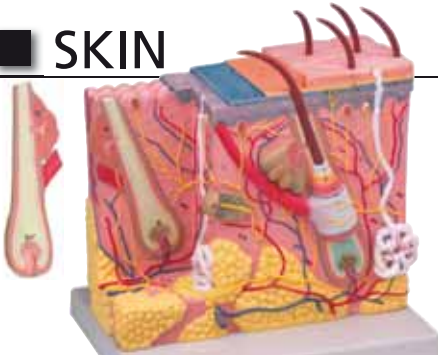
• 40058 LARYNX
Size: 18x11x8 cm - 450 g
5 parts - 2X
Mounted on base with stand.

Sectioned longitudinally to reveal intimate details of internal structure including hyoid muscles, vessels, bone, cartilages nerves and thyroid gland



40058

SKIN

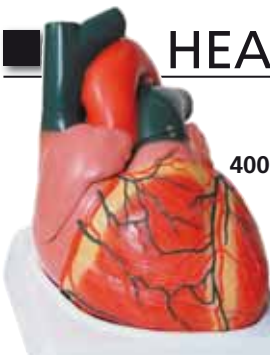


Anatomical structures are shown in details including the hair follicles, sebaceous, glands, sweat glands, erector muscles, Pacinian corpuscles, nerves and blood vessels

• 40060 SKIN MODEL - 70X
Size: 25x18x28 cm - 1.5 kg - 2 parts - 70X

HEART

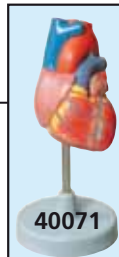
40072



Show internal structures including cardiac valves and the comparative morphology of the right and left ventricles

GIMA code	HEART SIZES	Kg	Parts	Mag
40071	11x7.5x9.5 cm	0.23	2	1X
40072	24x25x28 cm	2.9	4	3X

40071



RESPIRATORY SYSTEM

• 40050 RESPIRATORY SYSTEM
Size: 26x40x12 cm
- 1.3 kg
- 7 parts life size



DIGESTIVE AND URINARY SYSTEMS

40080



This model, 15x life size, shows the liver and gallbladder in open section with the complex network of vessels and bile ducts, displayed in different colours. The duodenum is partially dissected to to clarity and ease of examination.

Accurate representation of the pancreas, spleen and duodenum.

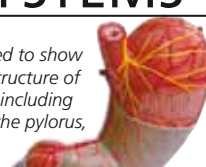
The pancreas is open to show the entire pancreatic duct.

The duodenum is partially dissected to expose its internal structure.



40086

Can be opened to show the internal structure of the stomach, including the mucosa, the pylorus, and a section of the gastric wall. Superficial dissection exposes the longitudinal, circular and oblique muscle layers, with nerves and vascular structures



40088



40090

Shows the male urinary bladder with the prostate gland surrounding the urethra



40094

GIMA code	DIGESTIVE AND URINARY SYSTEMS all supplied with table stand	Size	Weight	Parts	Magnif.
40080	LIVER SECTION WITH GALLBLADDER	28x27x14 cm	880 g	1	1.5X
40086	PANCREAS, DUODENUM AND SPLEEN	16x15x23 cm	350 g	1	1X
40088	STOMACH	16x14.5x5 cm	235 g	2	1.5X
40090	MALE URINARY BLADDER WITH PROSTATE	27x20x15 cm	1.2 kg	2	3X
40094	KIDNEY WITH ADRENAL GLAND+RENAL CORPUSCLE	40x15x8 cm	1.2 kg	1	3X

The kidney is shown with the renal capsule. Additional structures include: the cortex, medulla, pyramids with papillae, partially dissected renal pelvis, renal calices, ureter, blood vessels, suprarenal gland with cortex and medulla.